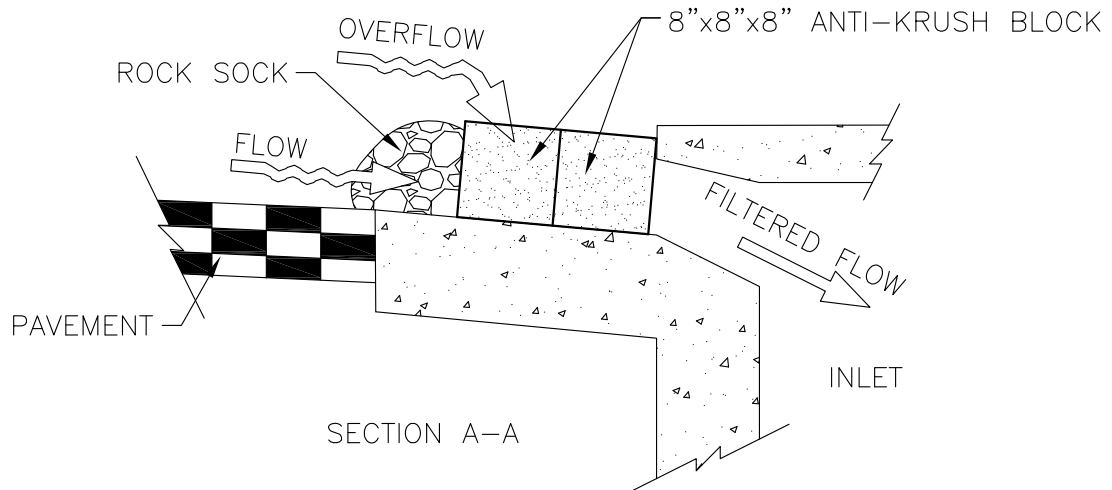
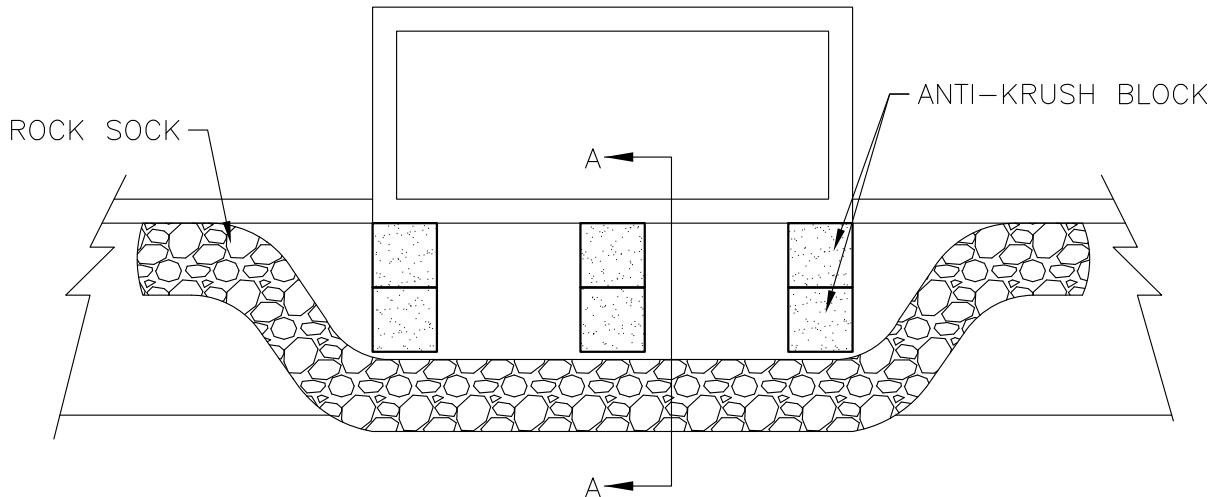


**ANTI-KRUSH BLOCK**  
 8"x8"x8"  
 AND  
 8"x8"x16"

**RUBBEROSION** inc.

351 W. 45TH AVENUE  
 DENVER, CO 80216  
 720-726-6120 PHONE  
 720-726-6121 FAX  
 RICK@RUBBEROSION.COM



**CURB INLET PROTECTION INSTALLATION NOTES:**

1. THE CURB INLET PROTECTION SHOWN ON BMP PLAN SHALL BE INSTALLED ON EXISTING INLETS PRIOR TO ANY LAND DISTURBING ACTIVITIES OR IMMEDIATELY AFTER THE INSTALLATION OF THE FIRST LIFT OF ASPHALT ON ROADWAYS DRAINING TO THE CURB INLET. ANTI-KRUSH BLOCKS OR THE ROCK SOCK SHALL BE USED AS INTERIM PROTECTION UNTIL THE FIRST LIFT OF ASPHALT IS INSTALLED.

**CURB INLET PROTECTION INSPECTION AND MAINTENANCE NOTES:**

1. THE EROSION CONTROL SUPERVISOR SHALL REGULARLY INSPECT THE CURB INLET PROTECTION.
2. ACCUMULATED SEDIMENT SHALL BE REMOVED AS SOON AS POSSIBLE, IMMEDIATELY IN MOST CASES.
3. THE CURB INLET PROTECTION SHALL REMAIN IN PLACE AND PROPERLY MAINTAINED UNTIL EROSION AND SEDIMENTATION IS NO LONGER A POSSIBILITY AS DETERMINED BY THE INSPECTOR.